


## Chapter 9 - References

- [1] A two-step estimation of consumer adoption of technology-based service innovations.  
<http://www.allbusiness.com/sales/internet-e-commerce/728713-1.html>
- [2] Bank Islam of Malaysia. Retrieved from <http://www.bankislam.com>
- [3] Creativity in mobile banking – Wit Software. Retrieved from <http://www.wit-software.com> Euronet Worldwide Mobile Banking Guide
- [4] Mattila, M. (2002). Factors affecting the Adoption of Mobile Banking Services, Journal of Internet Banking and Commerce (JIBC). Retrieved November 2008, from <http://www.arraydev.com/commerce/jibc/0306-04.htm>
- [5] FBC Bank : <http://www.fbc.co.zw/>
- [6] How stuff works  
<http://communication.howstuffworks.com/framed.htm?parent=sms.htm&url=http://www.clickz.com/stats/sectors/wireless/article.php/3530886>
- [7] How stuff work : <http://communication.howstuffworks.com/sms.htm>
- [8] Information as a Barrier to Innovation Adoption  
[http://conferences.anzmac.org/ANZMAC2007/papers/T%20Laukkanen\\_1a.pdf](http://conferences.anzmac.org/ANZMAC2007/papers/T%20Laukkanen_1a.pdf)  
 University of Moratuwa, Sri Lanka  
Electronic Theses & Dissertations  
[www.lib.mrt.ac.lk](http://www.lib.mrt.ac.lk)
- [9] Project-Proposal-Mobile-Banking-in-Tanzania  
<http://www.docstoc.com/docs/33568778/Project-Proposal-Mobile-Banking-in-Tanzania>
- [10] SMS banking <http://palisade.plynt.com/issues/2005Sep/sms-banking/>
- [11] Trends in mobile banking [http://en.wikipedia.org/wiki/Mobile\\_banking](http://en.wikipedia.org/wiki/Mobile_banking)
- [12] Ubiquitous Computing: Wear it or Not Weiser, 1991  
[http://www.cc.gatech.edu/classes/cs6751\\_97\\_fall/projects/say-cheese/gabriel/gfinal.html](http://www.cc.gatech.edu/classes/cs6751_97_fall/projects/say-cheese/gabriel/gfinal.html)
- [13] U-Commerce Expanding the universe of marketing  
<http://www.terry.uga.edu/~rwatson/Passau/u-comslides.pdf>
- [14] Undergraduate Attitudes and Expectations for Mobile Banking Journal of Internet Banking and Commerce, December 2006, vol. 11, no.3  
<http://www.arraydev.com/commerce/JIBC/2006-12/JIBC2.htm>
- [15] <http://www.informationweek.com/news/telecom/showArticle.jhtml?articleID>

- [16] <http://www.gao.gov/new.items/d06426.pdf>
- [17] <http://www.news.zdnet.com>
- [18] [www.nationstrust.com/sms](http://www.nationstrust.com/sms)
- [19] [www.hnb.net/data/on\\_the\\_move/sms\\_banking.php](http://www.hnb.net/data/on_the_move/sms_banking.php)
- [20] <http://htmlimg4.scribdassets.com/lm8d6expj4xz3aj/images/22-584cf73923.png>
- [21] Prototype.: <http://www.scis.nova.edu/~yaochin/660-p.htm#throwaway>
- [22] Geoffrion A. (1987) An Introduction to Structured Modeling. Management Science 33:5 (1987) 547-588.
- [23] [http://en.wikipedia.org/wiki/Data\\_flow\\_diagram](http://en.wikipedia.org/wiki/Data_flow_diagram)
- [24] [http://aubit4gl.sourceforge.net/aubit4gl/doc/manual/html/4gl\\_programming\\_language.html](http://aubit4gl.sourceforge.net/aubit4gl/doc/manual/html/4gl_programming_language.html)
- [25] Microsoft Corporation, Visio Professional  
<http://office.microsoft.com/home/office.aspx?assetid=FX01085798>
- [26] Sommerville I. (1998) Software Engineering, 5<sup>th</sup> Edition. Delhi : Pearson Education Asia (Low Priced Edition).



University of Moratuwa, Sri Lanka.  
Electronic Theses & Dissertations  
[www.lib.mrt.ac.lk](http://www.lib.mrt.ac.lk)

## Appendix A : Design Documentation

### A.1 Database Design

This diagram(Figure A:1) depicted the static view of the Update Branch Server processing. The branch servers applications need to be updated to take into consideration of SMS Banking functions.

### A.2 System Context

Illustrated below are the functionalities of each component and their interaction with each other.

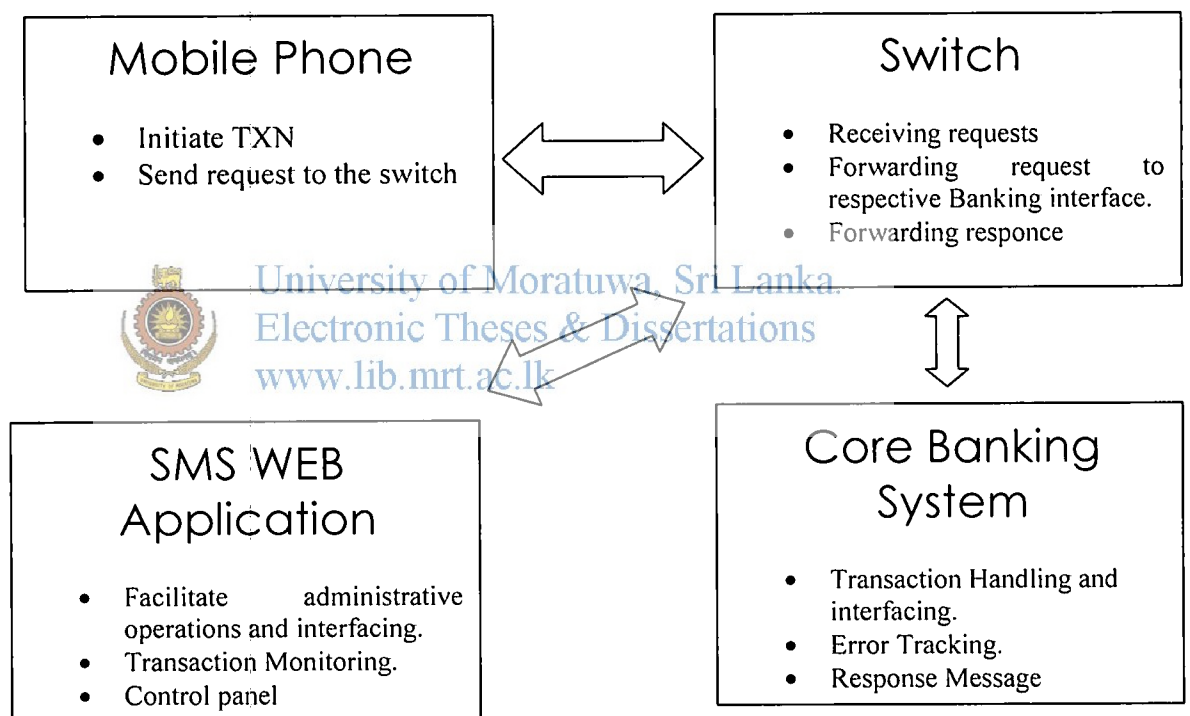


Figure A:1 Functionality of each component

## Appendix B : Implementation - Screen Shots

### B:1 SMS Banking Application

SMS Banking User Manual will guide you through setting up of the SMS Banking application and operating in the application step by step. This training manual will focus on the Reconciliation application and its processing and integration. Furthermore it will describe responsibility and functionality of each component to give the end user a broader idea on the application point of view.

```
AIX Version 5
Copyright IBM Corporation, 1982, 2008.
login: anj
anj's Password: _
```



University of Moratuwa, Sri Lanka.  
Electronic Theses & Dissertations  
*Figure B:1 Logging to the sysytem*  
[www.lib.mrt.ac.lk](http://www.lib.mrt.ac.lk)

### B:2 Viewing SMS Banking Reconciled Data

Figure B:2 Shows the Inquiry of the SMS Banking. It will be filtering data according to

Transaction date

RRN

Transaction Interface

Amount

Originating Branch

Destination Branch



Account No

Rrn no	Trn Type	St.	Amount	From Bran	To Bran	Trn Date	Act
[000000001181]	[NSB_EBNT_TRFS ]	[A]	500.00	[0001]	[0001]	[23/09/2010]	[IBT]
[000000001190]	[NSB_EBNT_TRFS ]	[A]	500.00	[0001]	[0001]	[23/09/2010]	[IBT]
[000000001192]	[NSB_EBNT_TRFS ]	[A]	500.00	[0001]	[0001]	[23/09/2010]	[IBT]
[000000001234]	[NSB_EBNT_TRFS ]	[A]	500.00	[0001]	[0001]	[23/09/2010]	[IBT]
[000000001235]	[NSB_EBNT_TRFS ]	[A]	500.00	[0001]	[0001]	[23/09/2010]	[IBT]
[000000001277]	[NSB_EBNT_TRFS ]	[A]	500.00	[0001]	[0001]	[24/09/2010]	[IBT]
[000000001314]	[NSB_EBNT_TRFS ]	[A]	500.00	[0001]	[0001]	[24/09/2010]	[IBT]
[000000001355]	[NSB_EBNT_TRFS ]	[A]	500.00	[0001]	[0001]	[24/09/2010]	[IBT]

F6 - More Info    F7-PgUp    F8-PgDown    F4 - List    F3- Exit

Figure B:2 Viewing SMS Banking Data

### Function Keys

- F7 -  If you want to go to Next Page Press F7 Key
- F8 -  If you want to go to Previous Page Press F8 Key
- F4 - If you want to see what are the existing Transaction Interfaces Press F4 , Following screen B:3 will Displays

Display Acqinterface	
Interface	Description
[ATMISO ]	[NSB ATM FOREIGN ]
[INTF_BNET ]	[NSB MASTER CARDS BY POS LOCAL ]
[INTF_BNET ]	[NSB MDU cards acquired by Other Bank's F ]
[INTF_BNET ]	[NSB MASTER CARDS BY POS FOREIGN ]
[INTF_EPIC ]	[MOBILE BANKING -HEAD OFFICE OUR ACCOUNT ]
[INTF_EPIC ]	[SMS BANKING -HEAD OFFICE OUR ACCOUNT ]
[INTF_MDS ]	[NSB MASTER CARDS BY OTHER BANKS ATM LOCA]
[INTF_MDS ]	[NSB MASTER CARDS BY OTHER BANK ATM FOREI]
[INTF_MDS ]	[NSB MDU cards acquired by Otherbanks ATM]
[INTF_SAMP ]	[SAMPATH ATM FOREIGN ]

F5 - Sel    F3 - Exit    F7 - PgUp    F8 - PgDn

Figure B:3 Existing Transaction Interfaces

F6 - If you want to see more details of the Transaction Press F6 ,  
Following screen B:4 will Displays

```

Acqinterface : [NSB_EBNT_TRFS ] RRn : [000000001181 ]
Recon Status : [A ] Remarks : [Successfully Reconciled ]
Amount : [ 500.00 ]

----- From Information -----
Br      Acno      Trn.date      Act   Trn Sign   Trnno      Line
      Type
[0001] [900016000177] [23/09/2010] [IBT] [SLP] [DR] [ 20310302] [ 1]

-----To Information -----
Br      Acno      Trn.date      Act   Trn Sign   Trnno      Line
      Type
[0001] [100010896250] [23/09/2010] [IBT] [SLP] [CR] [ 20310303] [ 1]
F3-Cancel

```

Figure B:4 Detail of the Transaction

 University of Moratuwa, Sri Lanka.  
Electronic Theses & Dissertations  
www.lib.mrt.ac.lk

B:3 SMS Banking Report Data

Following screen Figure B:6 displays report of the SMS Banking.

smsreceipt Sep 13, 2011 16:08:25 PAGE : 1

SMS Transactions Reconciliation Report as per the period Between 01/09/2011 and 13/09/2011

Source Details					Destination Details					Amount
From Ac No	Date	Branch	Trntype	Accsign   To Ac No	Date	Branch	Trntype	accsign		
NSB_TELB_TRNS										
100010748927	01/09/2011	0001	TEL	DR   900012301768	01/09/2011	0001	TEL	DR		500.00
100030157767	02/09/2011	0003	TEL	DR   100030862541	02/09/2011	0003	TEL	CR		1,000.00
100010748927	08/09/2011	0001	TEL	DR   100011087649	08/09/2011	0001	TEL	CR		19,900.00
100030797324	08/09/2011	0003	TEL	DR   100038143161	08/09/2011	0003	TEL	CR		700.00
100010872598	10/09/2011	0001	TEL	DR   100011064282	10/09/2011	0001	TEL	CR		3,200.00

Figure B:5 Report of SMS Banking Reconciled Data



## Appendix C : Code Listing

### C:1 Balance Inquiry

Function of getting Current Balance of the Account depicted in *Listing c:1*

```
FUNCTION Balance_Inquiry(AccNo)
DEFINE AccNo LIKE saaccs.sano
DEFINE f_avl_bal LIKE saaccs.curbal
DEFINE f_act_bal LIKE saaccs.curbal
DEFINE f_custno LIKE saaccs.h1no
SELECT h1no INTO f_custno
FROM saaccs
WHERE sano = AccNo
IF SQLCA.SQLCODE = NOTFOUND THEN
LET G_MOBT.ActCode = get_error_code(9, "C")
G_MOBT.ActCode = OK USING &acc
CALL get_balance("AVL",AccNo) returning f_avl_bal
CALL get_balance("ACT", AccNo) returning f_act_bal
-- seting balance in GMOBT.Balance
CALL set_bal_message(f_avl_bal, f_act_bal)
CALL get_cust_name(f_custno) RETURNING G_MOBT.MSG59[1,8],
G_MOBT.MSG59[9,18],
G_MOBT.MSG59[19,43]
END IF -- sending time stamp as AuthCode
LET G_MOBT.AuthCode = GET_TIME_STAMP() -- 6 - digits number
END FUNCTION -- Balance_Inquiry()
```



University of Moratuwa, Sri Lanka.  
Electronic Theses & Dissertations  
[www.lib.mrt.ac.lk](http://www.lib.mrt.ac.lk)

*Listing C:1 Get Current Balance of the Account*

## C:2 Validate Account Number

To check Account Number validity function depicted in *Listing c:2*.

```
FUNCTION IS_VALID_ACC(AccNo)
DEFINE AccNo LIKE saaccs.sano
DEFINE stat1 LIKE saaccs.status1
DEFINE stat3 LIKE saaccs.status3
DEFINE wcode LIKE saaccs.wthcode
DEFINE Available SMALLINT
LET Available = FALSE
-- no availability verification is necessary if GL transaction
IF G_MOBH.MTI = G_MTI_FIN_GL OR
   G_MOBH.MTI = G_MTI_REV_GL OR
   G_MOBH.MTI = G_MTI_REV_TR THEN
LET Available = TRUE
LET G_MOBT.ActCode = OK
RETURN Available
END IF
SELECT s.status1, s.status3, s.wthcode
INTO stat1, stat3, wcode
FROM saaccs s
WHERE s.sano = AccNo
IF SQLCA.SQLCODE = NOTFOUND THEN
LET Available = FALSE
LET G_MOBT.ActCode = get_error_code(9,"C")
ELSE
```



CASE

WHEN stat1 = "C"

LET Available = TRUE

LET G\_MOBT.ActCode = get\_error\_code(3, "C")

WHEN stat1 = "A" AND stat3 = "O"

LET Available = TRUE

IF wcode = "Y" THEN

LET G\_MOBT.ActCode = OK

ELSE

IF G\_MOBH.MTI = G\_MTI\_FIN\_TR

AND G\_MOBH.ProcCode[2] = "1" THEN

LET G\_MOBT.ActCode = get\_error\_code(14, "C")

ELSE

LET G\_MOBT.ActCode = OK

END IF

END IF



WHEN stat1 = "A" AND stat3 = "D"

LET Available = TRUE

LET G\_MOBT.ActCode = get\_error\_code(4, "C")

WHEN stat1 = "A" AND stat3 = "I"

LET Available = TRUE

LET G\_MOBT.ActCode = get\_error\_code(5, "C")

WHEN stat1 = "A" AND stat3 = "C"

LET Available = TRUE

LET G\_MOBT.ActCode = get\_error\_code(6, "C")

```

WHEN stat1 = "A" AND stat3 = "E"

    LET Available = TRUE

    LET G_MOBT.ActCode = get_error_code(7, "C")

OTHERWISE

    LET Available = TRUE

    LET G_MOBT.ActCode = get_error_code(8, "C")

END CASE

END IF

-- set global G_MOBT.ActCode & return a flag for availability

RETURN Available

END FUNCTION -- IS_VALID_ACC(AccNo)

```



Listing C:2 Check Account Number validity  
 University of Moratuwa, Sri Lanka.  
 Electronic Theses & Dissertations  
[www.lib.mrt.ac.lk](http://www.lib.mrt.ac.lk)

**C:3 Reverse Transaction**

When the reversal of the transaction depicted in *Listing c:3*

```

FUNCTION reversal_TR() -- set branch code Globally

--withdrawal or deposit

LET gf_function_ok = do_transaction( gf_ProcessingAc,
                                     gf_AccSign,
                                     gf_trn_amt,
                                     1, -- >0 for reversal
                                     gf_trdate,
                                     gf_Action,-- mobile cash withdrawal
                                     gf_trntype2,
                                     gf_TxnCatg -- SA, or GL
                                   )

-- reversal must always return successful ending

IF gf_function_ok THEN

LET gf_avl_bal = 0.0

LET gf_act_bal = 0.0
CALL get_balance("AVL",gf_ProcessingAc) returning gf_avl_bal
CALL get_balance("ACT", gf_ProcessingAc) returning gf_act_bal

CALL set_bal_message(gf_avl_bal, gf_act_bal)

END IF

END FUNCTION -- reversal_TR()

```

*Listing C:3 Reversal of the transaction*

#### C:4 Reconciliation Process

```
IF cfconfirm(22,20) THEN
    select count(*) into rcn_cnt
        from sms_from_acdata
        where f_recon_flg="N"
    F rcn_cnt=0 then
ERROR "Non Reconciled Records Does Not Exists ....."
EELSE
    ERROR "Reconciling Records - Please Wait ....."
    -- where f_status1 <> "R"
FOREACH cur_mofrom INTO gr_mofrom.*
    let addrecon="N"
    select count(*) into tocnt
    from sms_to_acdata
    where t_rrn_no=gr_mofrom.f_rrn_no and
        t_acqinterface=gr_mofrom.f_acqinterface and
        t_recon_flg="N"
    IF tocnt = 0 then
        initialize gr_moto.* to null
        initialize gr_orgn.* to null

    INSERT INTO smsrecon_err
        VALUES(gr_mofrom.f_status1,gr_moto.t_status1,
            gr_mofrom.f_brncode,gr_moto.t_brncode,
            gr_mofrom.f_acno,gr_moto.t_acno,
            gr_mofrom.f_rrn_no,
            gr_mofrom.f_acqinterface,,
```

```

        gr_mofrom.f_amount, gr_mofrom.f_trnno, gr_mofrom.f_lineno,
        gr_moto.t_trnno, gr_moto.t_lineno,
        gr_mofrom.f_action, gr_moto.t_action,
        gr_mofrom.f_trntype2, gr_moto.t_trntype2,
        gr_mofrom.f_accsign, gr_moto.t_accsign,
        gr_mofrom.f_trndate, gr_moto.t_trndate,
        gr_orgn.o_pay_service, gr_orgn.o_servchrg
        gr_orgn.o_comm_whom, gr_orgn.o_comm_glacno,
        gr_mofrom.f_reference, gr_moto.t_reference, usr_ident, cur_time,
        "Destination Account Details Not Found", "N")
    update sms_from_acdata
    set f_recon_flg="N"
    where f_rrn_no=gr_mofrom.f_rrn_no and
        f_acqinterface=gr_mofrom.f_acqinterface and
        f_adddate=gr_mofrom.f_adddate and
        f_mti=gr_mofrom.f_mti
    let addrecon="N"
    initialize gr_mofrom.* to null
    initialize gr_moto.* to null
    initialize gr_orgn.* to null
ELSE
    initialize gr_moto.* to null
    initialize gr_orgn.* to null
    select * into gr_moto.*
    from sms_to_acdata
    where t_rrn_no=gr_mofrom.f_rrn_no and
        t_acqinterface=gr_mofrom.f_acqinterface and
        t_recon_flg="N"

```



```
IF gr_mofrom.f_status1 = gr_moto.t_status1 then
```

```
    let addrecon="Y"
```

```
ELSE
```

```
    insert into smsrecon_err
```

```
    values(gr_mofrom.f_status1,gr_moto.t_status1,
```

```
          gr_mofrom.f_brncode,
```

```
          gr_moto.t_brncode,gr_mofrom.f_acno,
```

```
          gr_moto.t_acno,gr_mofrom.f_rrn_no,
```

```
          gr_mofrom.f_acqinterface,gr_mofrom.f_amount,
```

```
          gr_mofrom.f_trnno,gr_mofrom.f_lineno,
```

```
          gr_moto.t_trnno,gr_moto.t_lineno,
```

```
          gr_mofrom.f_action,gr_moto.t_action,
```



```
          gr_mofrom.f_trntype2,gr_moto.t_trntype2,
```

```
          gr_mofrom.f_accsign,gr_moto.t_accsign,
```

```
          gr_mofrom.f_trndate,gr_moto.t_trndate,
```

```
          gr_orgn.o_pay_service,gr_orgn.o_servchrg,
```

```
          gr_orgn.o_comm_whom,gr_orgn.o_comm_glacno,
```

```
          gr_mofrom.f_reference,gr_moto.t_reference,
```

```
          usr_ident,cur_time,
```

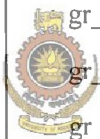
```
          "Source & Destination Status Mismatch","N")
```



```

IF infext="Y" then
select count(*) into orcnt
from sms_orgndata
where o_rm_no=gr_mofrom.f_rm_no and
      o_acqinterface=gr_mofrom.f_acqinterface and
      o_recon_flg="N"
IF orcnt=0 then
      initialize gr_orgn.* to null
insert into smsrecon_err
values
(gr_mofrom.f_status1,gr_moto.t_status1,
 gr_mofrom.f_brncode,
 gr_moto.t_brncode,gr_mofrom.f_acno,
 gr_moto.t_acno,gr_mofrom.f_rm_no,
 gr_mofrom.f_acqinterface,gr_mofrom.f_amount,
 gr_mofrom.f_trnno,gr_mofrom.f_lineno,
 gr_moto.t_trnno,gr_moto.t_lineno,
 gr_mofrom.f_action,gr_moto.t_action,
 gr_mofrom.f_trntype2,gr_moto.t_trntype2,
 gr_mofrom.f_accsign,gr_moto.t_accsign,
 gr_mofrom.f_trndate,gr_moto.t_trndate,
 gr_orgn.o_pay_service,gr_orgn.o_servchrg,
 gr_orgn.o_comm_whom,gr_orgn.o_comm_glacno,
 gr_mofrom.f_reference,gr_moto.t_reference,
 usr_ident,cur_time,
"Originating Record Not Found","N")
let addrecon="N"

```



```

        initialize gr_mofrom.* to null
initialize gr_moto.* to null
initialize gr_orgn.* to null
ELSE
initialize gr_orgn.* to null
    select * into gr_orgn.*
from sms_orgndata
    where o_rrn_no=gr_mofrom.f_rrn_no and
    o_acqinterface=gr_mofrom.f_acqinterface and
    o_recon_flg="N"
IF gr_orgn.o_status1 <> gr_mofrom.f_status1 then
    insert into smsrecon_err
        values
            gr_mofrom.f_status1,gr_moto.t_status1,
            gr_mofrom.f_brncode,
            gr_moto.t_brncode,gr_mofrom.f_acno,
            gr_moto.t_acno,gr_mofrom.f_rrn_no,
            gr_mofrom.f_acqinterface,gr_mofrom.f_amount,
            gr_mofrom.f_trnno,gr_mofrom.f_lineno,
            gr_moto.t_trnno,gr_moto.t_lineno,
            gr_mofrom.f_action,gr_moto.t_action,
            gr_mofrom.f_trntype2,gr_moto.t_trntype2,
            gr_mofrom.f_accsign,gr_moto.t_accsign,
            gr_mofrom.f_trndate,gr_moto.t_trndate,
            gr_orgn.o_pay_service,gr_orgn.o_servchrg,
            gr_orgn.o_comm_whom,gr_orgn.o_comm_glacno,
            gr_mofrom.f_reference,gr_moto.t_reference,
            usr_ident,cur_time,
            "Originating Record Status Mismatch","N")

```



```

IF gr_mofrom.f_amount <> gr_moto.t_amount then
  IF gr_mofrom.f_amount > gr_moto.t_amount then
    let rec_amount = gr_moto.t_amount
  END IF
  IF gr_moto.t_amount > gr_mofrom.f_amount then
    let rec_amount = gr_mofrom.f_amount
  END IF
ELSE
  let rec_amount = gr_mofrom.f_amount
END IF

select count(*) INTO rcondata_cnt
from smsrecon_data
where rrn_no=gr_mofrom.f_rrn_no and
      acqinterface=gr_mofrom.f_acqinterface --and
      IF rcondata_cnt > 0 then
ERROR "Reconciled Record Exists: Duplicate Reconciliation
Does Not Allowd !!!!!!!!!!!"
      ELSE
        IF addrecon="Y" then
          insert into smsrecon_data
          values
("A",gr_mofrom.f_status1,gr_mofrom.f_brncode,
      gr_moto.t_brncode,gr_mofrom.f_acno,
      gr_moto.t_acno,gr_mofrom.f_rrn_no,
      gr_mofrom.f_acqinterface,rec_amount,
      gr_mofrom.f_trnno,gr_mofrom.f_lineno,
      gr_moto.t_trnno,gr_moto.t_lineno,
      gr_mofrom.f_action,gr_moto.t_action,

```



University of Moratuwa, Sri Lanka.  
 Electronic Theses & Dissertations  
 www.lib.moratuwa.lk

```

        gr_mofrom.f_trntype2,gr_moto.t_trntype2,
;r_mofrom.f_accsign,gr_moto.t_accsign,
;r_mofrom.f_trndate,gr_moto.t_trndate,
;r_orgn.o_pay_service,gr_orgn.o_servchrg,
;r_orgn.o_comm_whom,gr_orgn.o_comm_glacno,
;r_mofrom.f_reference,gr_moto.t_reference,
;sr_ident,cur_time;
Successfully Reconciled","N")

        update sms_from_acdata
        set f_recon_flg="Y"
        where f_rrn_no=gr_mofrom.f_rrn_no and
                f_acqinterface=gr_mofrom.f_acqinterface and
                f_mti=gr_mofrom.f_mti

        update sms_to_acdata
        set t_recon_flg="Y"
        where t_rrn_no=gr_moto.t_rrn_no and
                t_acqinterface=gr_moto.t_acqinterface and
                t_mti=gr_moto.t_mti

        update sms_orgndata
        set o_recon_flg="Y"
        where o_rrn_no=gr_orgn.o_rrn_no and
                o_acqinterface=gr_orgn.o_acqinterface --and
END IF

```

*Listing 6:5 Data Reconciliation Process*

## Appendix D : User Feedback Form

1.) Details of the User :-

- a.) Name : -.....  
 b.) Branch : -.....  
 c.) Designation:-.....

2.) Position in the Bank : - .....

3.) Your day to day works related for : -

- Back Office   
 Teller   
 Officer Functions

4.) Your view on modules in SMS Banking, (tick the box of your choice)

(1 - Very Poor, 2 - Poor, 3 - Average, 4 - Good, 5 - Very Good)

- |                     | 1                        | 2                        | 3                        | 4                        | 5                        |
|---------------------|--------------------------|--------------------------|--------------------------|--------------------------|--------------------------|
| a.) Balance Inquiry | <input type="checkbox"/> | <input type="checkbox"/> | <input type="checkbox"/> | <input type="checkbox"/> | <input type="checkbox"/> |
| b.) Fund Transfer   | <input type="checkbox"/> | <input type="checkbox"/> | <input type="checkbox"/> | <input type="checkbox"/> | <input type="checkbox"/> |
| c.) Bill Payment    | <input type="checkbox"/> | <input type="checkbox"/> | <input type="checkbox"/> | <input type="checkbox"/> | <input type="checkbox"/> |
| d.) Pin Change      | <input type="checkbox"/> | <input type="checkbox"/> | <input type="checkbox"/> | <input type="checkbox"/> | <input type="checkbox"/> |



University of Moratuwa, Sri Lanka.  
 Electronic Theses & Dissertations  
[www.lib.mrt.ac.lk](http://www.lib.mrt.ac.lk)

5.) Your view on Reconciliation Functions. (tick the box of your choice)

(1 - Very Poor, 2 - Poor, 3 - Average, 4 - Good, 5 - Very Good)

- |                     | 1                        | 2                        | 3                        | 4                        | 5                        |
|---------------------|--------------------------|--------------------------|--------------------------|--------------------------|--------------------------|
| a.) Data Extracting | <input type="checkbox"/> | <input type="checkbox"/> | <input type="checkbox"/> | <input type="checkbox"/> | <input type="checkbox"/> |
| b.) Data Loading    | <input type="checkbox"/> | <input type="checkbox"/> | <input type="checkbox"/> | <input type="checkbox"/> | <input type="checkbox"/> |
| c.) Reconciliation  | <input type="checkbox"/> | <input type="checkbox"/> | <input type="checkbox"/> | <input type="checkbox"/> | <input type="checkbox"/> |
| d.) Inquiry         | <input type="checkbox"/> | <input type="checkbox"/> | <input type="checkbox"/> | <input type="checkbox"/> | <input type="checkbox"/> |
| e.) Reports         | <input type="checkbox"/> | <input type="checkbox"/> | <input type="checkbox"/> | <input type="checkbox"/> | <input type="checkbox"/> |

6.) Your view on Software Quality of the System. (tick the box of your choice)

(1 - Very Poor, 2 - Poor, 3 - Average, 4 - Good, 5 - Very Good)

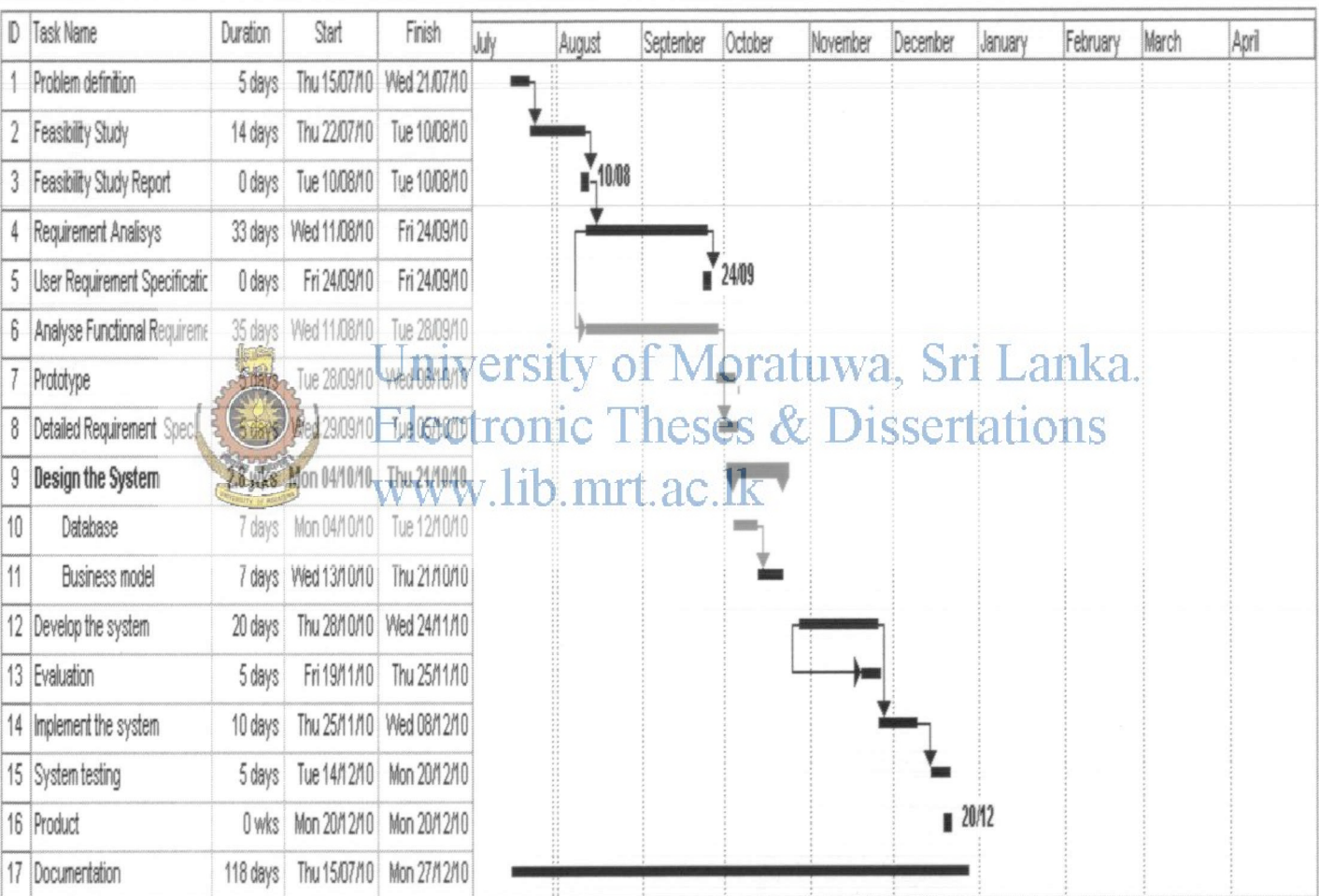
1      2      3      4      5





## Appendix E : Time Schedule

Time schedule of the project with includes preparations, the implementation and evaluation.



University of Moratuwa, Sri Lanka.  
 Electronic Theses & Dissertations  
[www.lib.mrt.ac.lk](http://www.lib.mrt.ac.lk)

Figure c:1 Time Schedule

